

Installation,
Operation, Service
and Replacement
Parts Information

Installation and Operation Manual

Filter and Hopper Bag-In/Bag-Out Filter and Hopper Bag-Out Only

Models Downflo[®] II (DFT) and Downflo[®] Oval 1[™] (DFO)



Throughout this manual statements indicating precautions necessary *to avoid equipment failure* are referenced in a **Note**. Statements indicating potential hazards that could result in *personal injury or property damage* are referenced in a **Caution!** box.

This manual is property of the owner. Leave with the unit when set-up and start-up are complete. Donaldson Company reserves the right to change design and specifications without prior notice.



Caution!

Application of Dust Control Equipment

- Combustible materials such as buffing lint, paper, wood, aluminum or steel dust, weld fume, or flammable solvents represent fire or explosion hazards. Use special care when selecting and operating all dust or fume collection equipment when combustible materials are present to protect workers and property from damage due to fire and/or explosion. Consult and comply with National and Local Codes relating to fire or explosion and all other appropriate codes when determining the location and operation of dust or fume collection equipment.
- When combustible materials are present, consult with an installer of fire extinguishing systems familiar with these types of fire hazards and local fire codes for recommendations and installation of fire extinguishing and explosion protection systems. Donaldson dust collection equipment is not equipped with fire extinguishing or explosion protection systems.
- DO NOT allow sparks, cigarettes or other burning objects to enter the hood or duct of any dust or fume control equipment as these may initiate a fire or explosion.
- For optimum collector performance, use only Donaldson replacement parts.

Special Concerns for Bag-In/Bag-Out

- Use extreme caution when changing bags in hazardous material applications.
- Wear protective clothing, including a respirator, to prevent accidental exposure to hazardous materials.
- When properly used, the Bag-In/Bag-Out Option reduces exposure to contaminants and exposure of contaminants to the atmosphere.

Warning – Improper operation of a dust control system may contribute to conditions in the work area or facility that could result in severe personal injury and product or property damage. Check that all collection equipment is properly selected and sized for the intended use.

Contents

Description	4
Filter Bag-In/Bag-Out	4
Bag-Out	4
Bag-In	6
Filter Bag-Out Only	6
Filter Replacement	6
Hopper Bag-In/Bag-Out	7
Drum Cover Installation	7
Hopper Bag Installation	7
First Fit Bag-Out	7
Bag-In	8
DFO 1-1, 2-2, and 3-3	8
Replacement Parts	11
Service Notes	24
Warranty	28



Caution!

- Use extreme caution when changing bags in hazardous material applications.
- Wear protective clothing, including a respirator, to prevent accidental exposure to hazardous materials.
- When properly used, the Bag-In/Bag-Out Option reduces exposure to contaminants and exposure of contaminants to the atmosphere.



This manual contains specific precautionary statements relative to worker safety. Read thoroughly and comply as directed. Discuss the use and application of this equipment with a Donaldson representative. Instruct all personnel on safe use and maintenance procedures.

Data Sheet

Model Number _____	Serial Number _____
Ship Date _____	Installation Date _____
Customer Name _____	
Address _____	
Filter Type _____	
Accessories _____	
Other _____	

Description

The Bag-In/Bag-Out option allows installation and removal of filters and collected dust with reduced exposure to contaminants and exposure of contaminants to the atmosphere. Filter Bag-In/Bag-Out features a bag collar mounted to the unit over the filter access cover. Filter cartridges are installed and removed inside a sealed bag. Hopper Bag-In/Bag-Out features a drum or pail, liner, and elastic-top bags secured to a hopper adapter collar. Collected dust is removed and disposed of in a sealed bag.



Caution!

- Follow this procedure carefully to ensure safe filter changes.
- This is not a simple procedure and errors may have serious health consequences.

Filter Bag-In/Bag-Out

Bag-Out



Caution!

- Turn power supply OFF.
- Turn compressed-air supply OFF and bleed lines before performing service or maintenance work.

Note: Start at the top access ports and work down.

1. Place a 3 x 3-ft platform in front of and approximately 3- to 6-inches below the first access port.
2. Remove the plastic cover from the bag collar to expose the bag and filter-access port. Pull the bag out and lay on the platform.
3. If the bag is taped to the bag collar, secure with a safety strap and remove tape.
4. Using the bag as a glove, reach into the bag collar, and remove the access cover. Lay the cover inside the bag on the platform.



Platform and Collar Cover



Collar Cover Removed

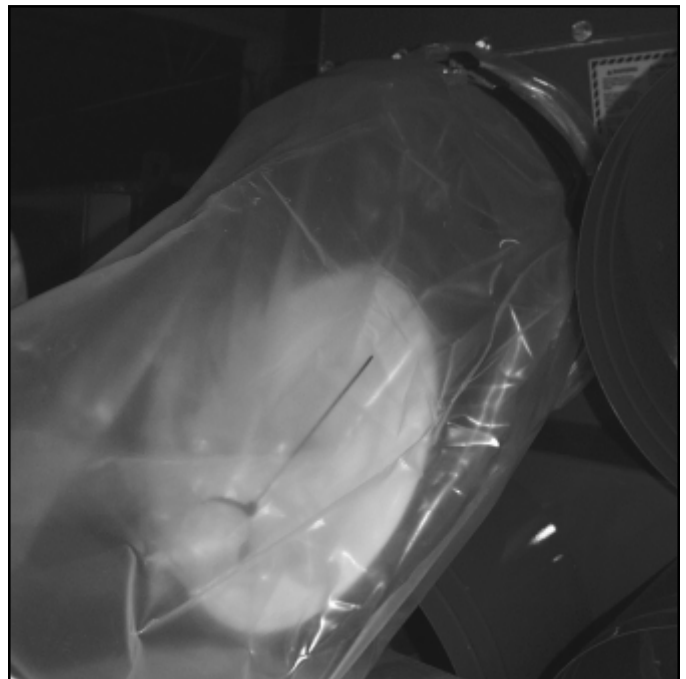
5. Break the seal between the filter and the sealing surface. Slide the first filter out of the collector and into the bag as far as possible. Lay the access cover inside the bag collar.
6. Close and seal the bag near the filter using two cable ties placed approximately 2-inches apart. Cut the bag between the ties. Dispose of filter properly. Gently push the stub into the collar.
7. Open a new bag and place the open end around the bag collar as close to the collector as possible. The bag stub is now inside the new bag and access cover is inside the bag stub.
8. Loosen the safety strap, slide the new bag under the strap, and the bag stub toward the end of the collar. Tighten the safety strap to hold the new bag only and carefully remove the bag stub from the collar.
9. Use the pull rod located in the filter support yoke to move the second filter toward the bag collar.
10. Close and seal the bag near the filter using two cable ties placed approximately 2-inches apart. Cut the bag between the ties. Dispose of filter.



Cut Between Cable Ties



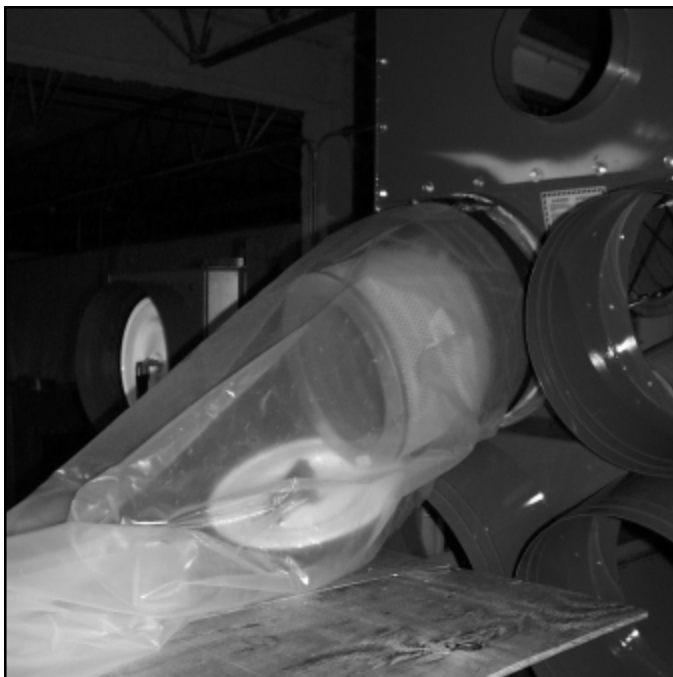
Filter Removed



*Bag Stub is Inside the New Bag
and Access Cover is Inside the Bag Stub*

Bag-In

1. Place a new filter inside a new bag with the filter gasket towards the bag opening.
2. Place the open end of the new bag around the bag collar as close to the collector as possible.
3. Loosen the safety strap, slide the new bag under the strap, and the bag stub toward the end of the collar. Tighten the safety strap to hold the new bag only and carefully remove the bag stub from the collar.
4. Slide the new filter onto the yoke and into the collector.
5. Close and seal the bag near the collar using two cable ties placed approximately 2-inches apart. Cut the bag between the cable ties.
6. Repeat steps 1 through 4 to install the next filter.
7. Replace the filter access cover. Roll and store the bag inside the bag collar. Tighten access cover securely.
8. Move the platform to the next access port and repeat the above steps.



Slide New Filter into the Collector

Filter Bag-Out Only



Caution!

- Turn power supply OFF.
- Turn compressed-air supply OFF and bleed lines before performing service or maintenance work.

1. Start at the top port, remove filter access cover, and set aside.
2. Place the open end of a new bag over the bag collar as close to the collector as possible and secure with a safety strap.
3. Using the bag as a glove, reach into the collar, grasp the filter and slide the filter into the bag.
4. Use cable ties to close the bag.
5. Remove the safety strap and dispose of the bagged filter properly.
6. Repeat Steps 1 through 5 to remove the second filter. Use the pull-rod, stored in the filter support yoke, to pull the second filter to the access opening.
7. With bag and strap removed, install new filter cartridges gasket-end first.
8. Replace access cover and tighten securely.

Filter Replacement

1. Slide the new filter cartridge onto each suspension yoke.
Note: Insert filter gasket end first.
2. Wipe cover gaskets clean and replace covers. Tighten securely by hand.
Note: Tighten access covers securely. Gaskets must be compressed to seal properly.
3. Turn electrical power and compressed air supply ON before starting unit.

Hopper Bag-In/Bag-Out, 55-Gallon Drum

Drum Cover Installation

1. Secure the hose to the drum cover with the hose clamp supplied.
2. Slide the drum cover clamp over the unattached end of the hose.
3. Secure the unattached hose end to the slide gate adapter with the hose clamp supplied.

Hopper Bag Installation

1. Place the bag with plastic liner inside the 55-gallon drum. Position the liner upright inside the drum. It will expand and hold the bag securely to the inside of the 55-gallon drum.

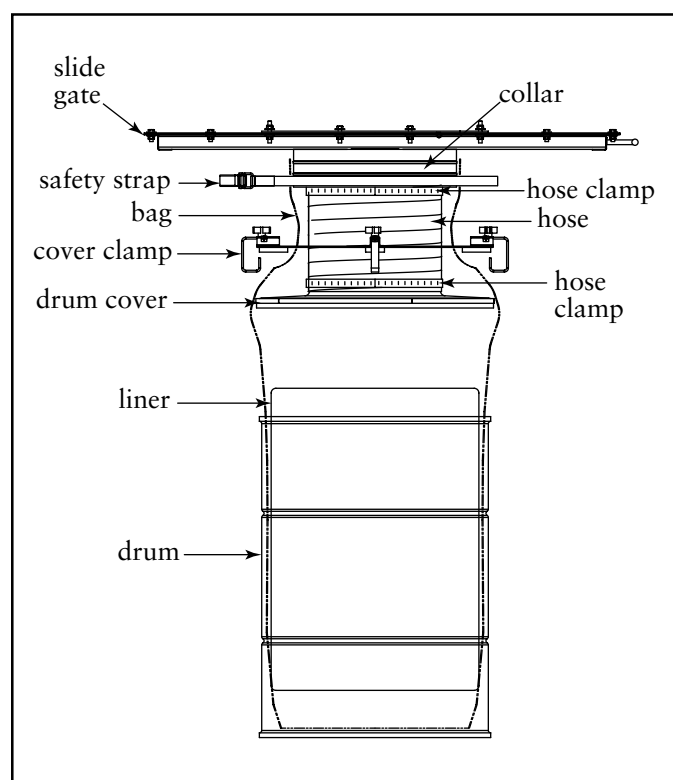
Note: The 55-gallon drum is supplied by the customer.

2. Position the 55-gallon drum under the drum cover, which is attached to the hopper.
3. Draw the open end of the bag around the drum cover and through the drum cover clamp assembly. The bag will be outside the drum cover but inside the drum cover clamp assembly.
4. Slide the open end of the bag around the collar adapter, which is located under the slide gate. Use the buckle strap to securely fasten the bag to the collar adapter.
5. Position the drum cover carefully on top of the 55-gallon drum.
6. Secure the 4 clamps of the drum cover clamp assembly to the drum by tightening the knobs. Make sure the clamps engage the top rim of the 55-gallon drum.

First Fit Bag-Out

Note: Turn pulse cleaning system OFF before using the hopper Bag-In or Bag-Out process.

1. Leaving the bag securely strapped to the collar adapter, loosen the four clamps on the drum cover clamp and drum cover assembly.
2. Lift the ring and drum cover assembly up and away from the 55-gallon drum. A helper should hold the drum cover assembly out of the way.
3. Close and seal the bag near the drum using two cable ties placed approximately 2-inches apart. Cut the bag between the cable ties.
4. Remove the drum from under the hopper and dispose of drum and bag or bag only.



55-Gallon Drum

Bag-In

Note: Turn pulse cleaning system OFF before using the hopper Bag-In or Bag-Out process.

1. Prepare a new bag with plastic liner.
2. Place the open end of the new bag around the bag stub and drum cover assembly and through drum cover clamp. Drum cover and old bag stub will be inside the bag, and drum cover clamp will be outside the bag.
3. Loosen the strap from the collar adapter and carefully slide the bag stub down to the ribbed section of the collar adapter. Do not slip the bag stub off the collar adapter.
4. Slide the new bag over the bag stub and secure with the safety strap. The safety strap should hold the new bag only. At this point the old bag stub is inside the new bag.
5. Using the new bag as a glove, carefully remove the old bag stub from the collar adapter and position it in the bottom corner of the new bag.
6. Use a cable tie to isolate the bag stub in the corner of the new bag. The bag stub must be isolated to prevent it from being drawn into the hopper.
7. Place the new bag and polystyrene liner into a 55-gallon drum.
8. Position the drum cover assembly carefully on top of the 55-gallon drum.
9. Secure the four clamps on the drum cover clamp and drum cover assembly by tightening the knobs. Make sure the clamps engage the top rim of the 55-gallon drum.

DF0 1-1, 2-2, and 3-3

First Fit Bag-In



Caution!

- Turn power supply OFF.
- Turn compressed-air supply OFF and bleed lines before performing service or maintenance work.

1. Coil the plastic liner and place it upright inside the bottom of the plastic bag.
2. Insert the bag and liner into the 10-gallon dust container. The plastic liner will uncoil and expand the bag against sides of the container.
3. Slide two safety straps over the plastic bag near the dust container.
4. Place the container with bag near the front or side of the collector.
5. Place open end of bag around hopper collar adapter located under the hopper.



Two Safety Straps Around Bag

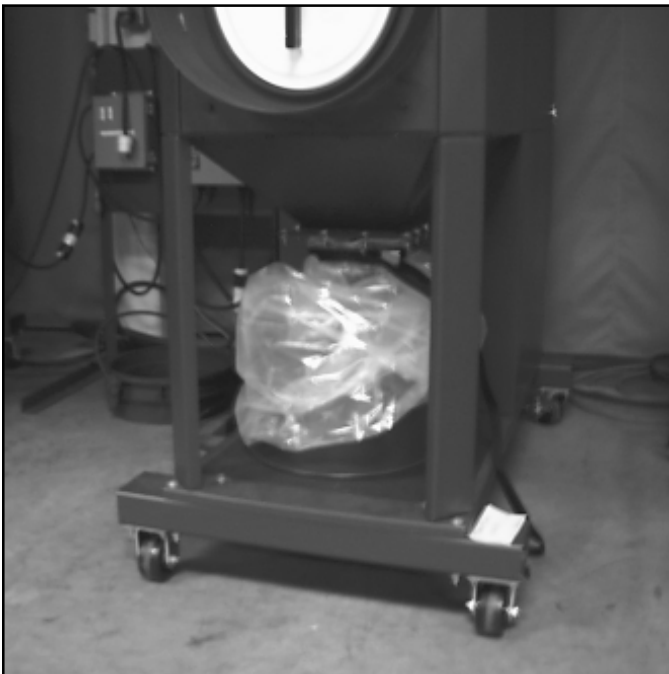
6. Slide one safety strap around collar adapter and tighten securely.
7. Place dust container under hopper. Fold or roll excess bag around container for a neat appearance.
8. Secure the folded excess bag to the container using the second safety strap to prevent the bag from collapse and protect from vacuum that will draw the bag up into the collector.



Secure Bag to Collar Adapter With One Safety Strap



Secure Folded Bag to the Container



Place Dust Container Under Hopper



DFO 1-1 to 3-3 Hopper Bag-In

First Fit Bag-Out



Caution!

- Turn power supply OFF.
- Turn compressed-air supply OFF and bleed lines before performing service or maintenance work.

1. Leaving the bag securely strapped to the collar adapter, loosen and remove the safety strap securing the excess bag to the container. Unfold the excess bag.
2. Carefully move the container from under the hopper to the floor.
3. Close and seal the bag near the hopper collar adapter using two cable ties placed approximately 2-inches apart. Cut the bag between the cable ties.
4. Dispose of bag and waste material properly.

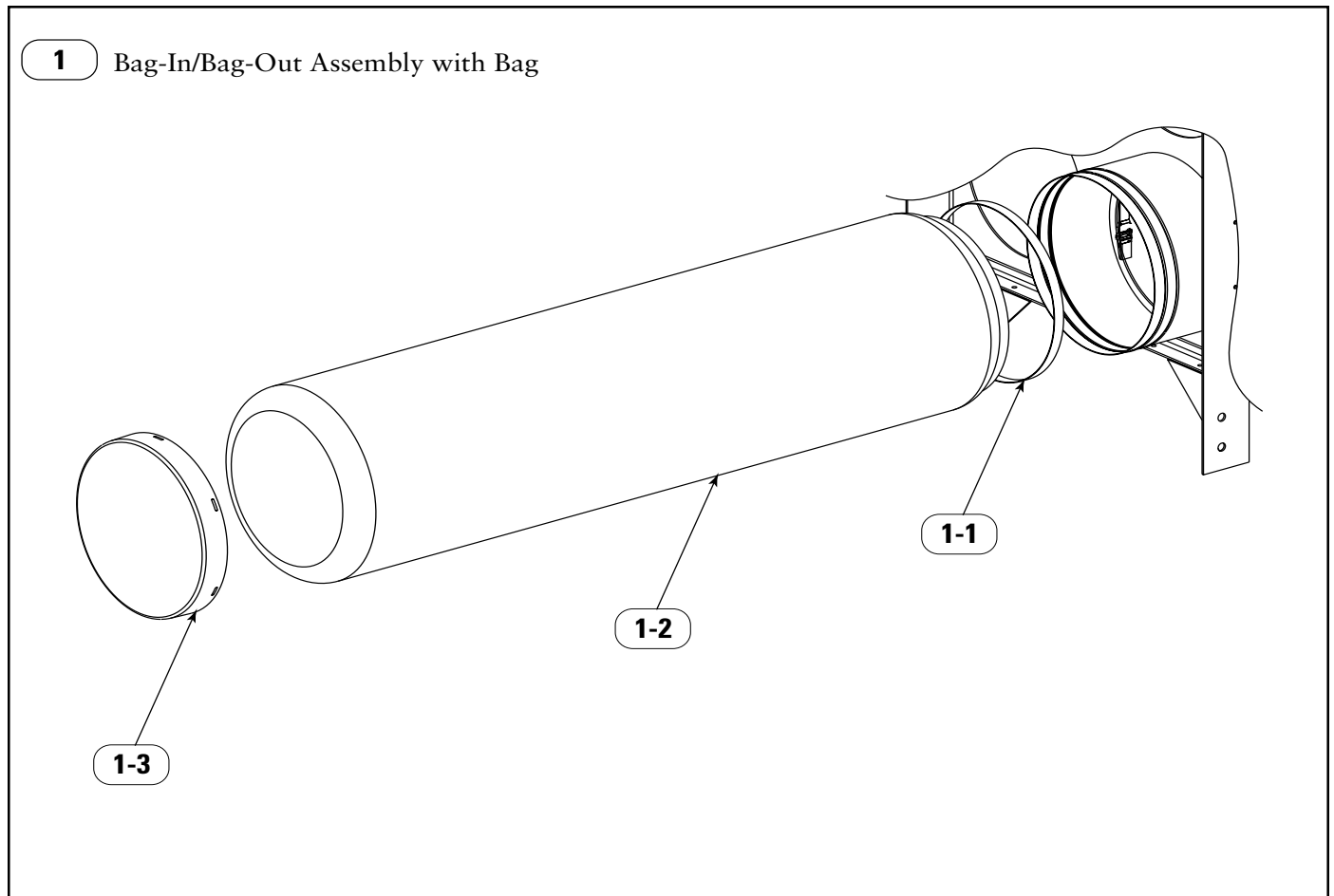


Seal the Bag Using Two Cable Ties

Bag-In

1. Coil the plastic liner and place it upright inside the bottom of the plastic bag.
2. Insert the bag and liner into the 10-gallon dust container. The plastic liner will uncoil and expand the bag against sides of the container.
3. Slide two safety straps over the plastic bag near the dust container.
4. Place the container with bag near the front or side of the collector.
5. Loosen the strap from the collar adapter and carefully slide the bag stub down to the ribbed section of the collar adapter. Do not slip the bag stub off the collar adapter.
6. Slide the new bag over the bag stub and secure with the safety strap. The safety strap should hold the new bag only. At this point the old bag stub is inside the new bag.
7. Using the new bag as a glove, carefully remove the old bag stub from the collar adapter and position it in the bottom corner of the new bag.
8. Use a cable tie to isolate the bag stub in the corner of the new bag.
9. Place the dust container under the hopper. Fold or roll excess bag around container for a neat, stowed appearance.
10. Secure the folded excess bag to the container using the second safety strap to prevent the bag from collapse and protect from vacuum that will draw the bag up into the collector.

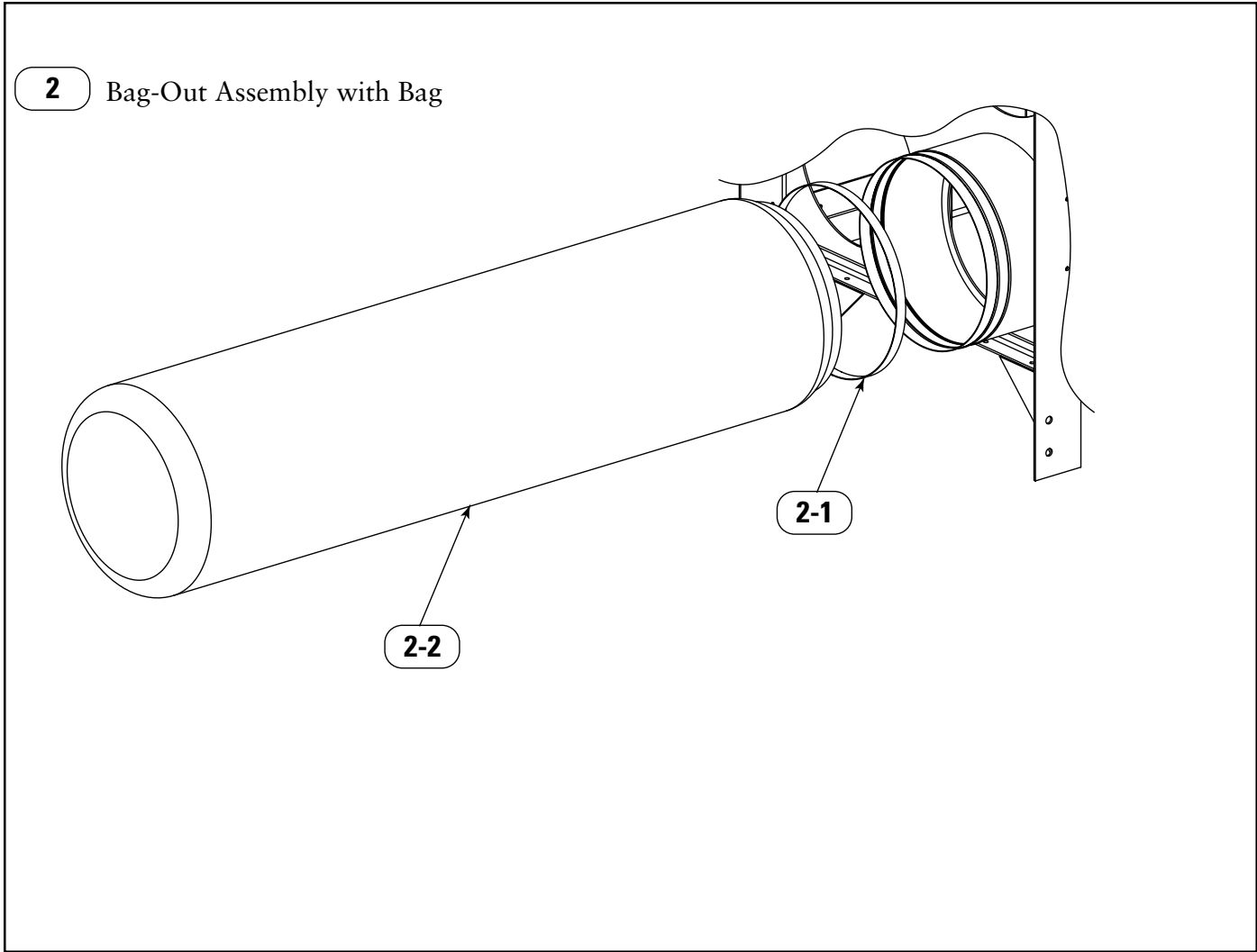
Replacement Parts



Parts Drawing 1, Bag-In/Bag-Out Assembly with Bag

Item	Part Number	Description	Model
1	2SG-AD33075-02	Bag-In/Bag-Out Assembly with Bag DFT	DFT 2-8, 2-12, 2-16, 2-24, 2-36, 3-12, 3-24, 3-36, 3-48, 3-60, 3-72, 4-16, 4-32, 4-48, 4-64, 4-80, 4-96, 4-112, 4-128
1	2SG-AD33075-05	Bag-In/Bag-Out Assembly with Bag DFT 2-4/3-6	DFT 2-4, 3-6
1-1	8PP-25397-00	Strap Webbing with Buckle	All
1-2	8PP-25372-00	Bag Polyethylene	All
1-3	8PP-25373-00	Cap Polyethylene	All

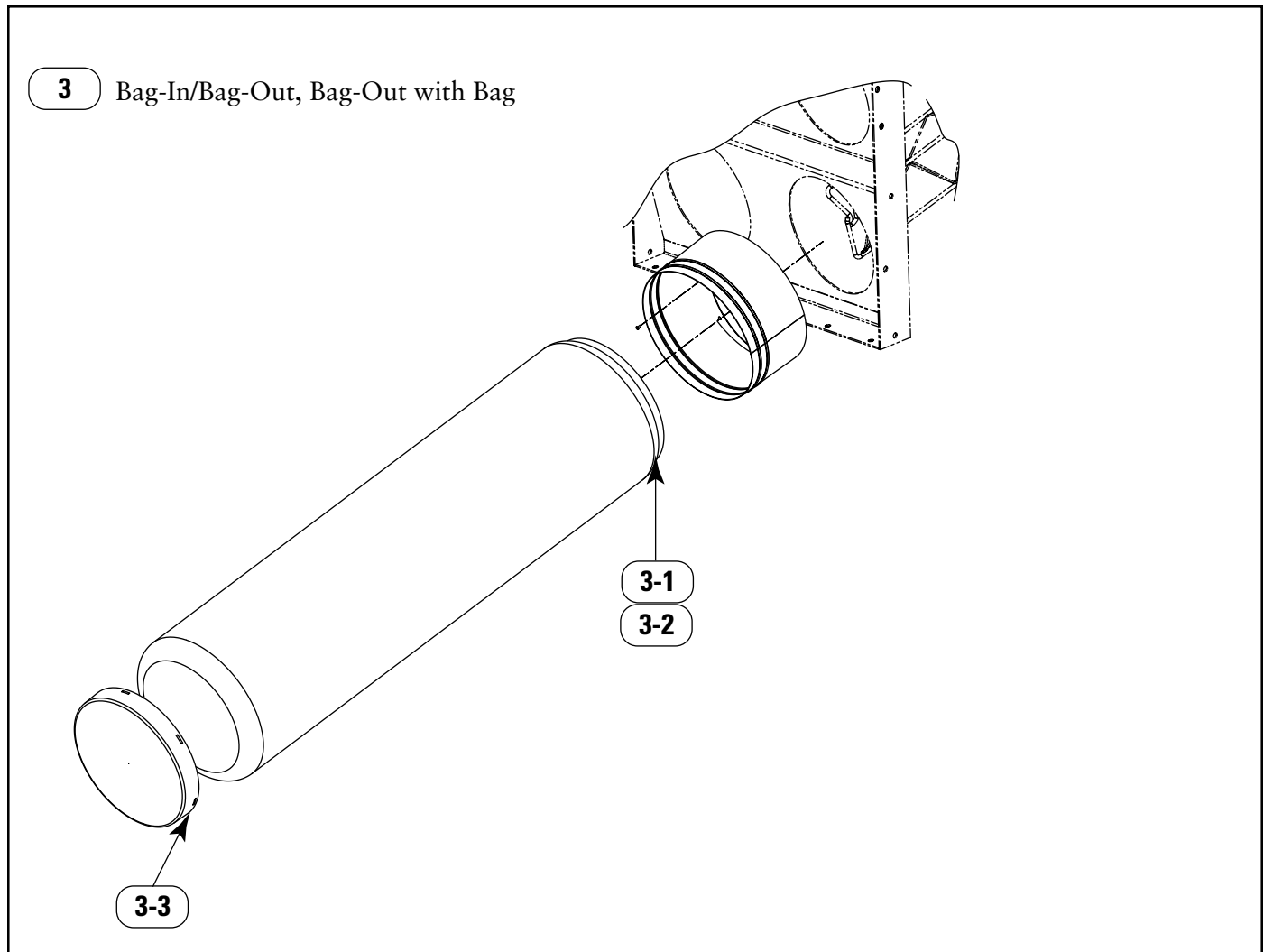
Replacement Parts, continued



Parts Drawing 2, Bag-Out Assembly with Bag

Item	Part Number	Description	Model
2	2SG-AD33075-03	Bag-Out Assembly with Bag DFT	DFT 2-8, 2-12, 2-16, 2-24, 2-36, 3-12, 3-24, 3-36, 3-48, 3-60, 3-72, 4-16, 4-32, 4-48, 4-64, 4-80, 4-96, 4-112, 4-128
2	2SG-AD33075-04	Bag-Out Assembly with Bag DFT 2-4/3-6	DFT 2-4, 3-6
2-1	8PP-25397-00	Strap Webbing with Buckle	All
2-2	8PP-25372-00	Bag Polyethylene	All

Replacement Parts, continued



Parts Drawing 3, Bag-In/Bag-Out with Bag

Item	Part Number	Description	Model
3	2SG-AD33498-02	Bag-In/Bag-Out with Bag DFO 2-4/3-6	All
3	2SG-AD33498-03	Bag-Out with Bag DFO 2-4/3-6	All

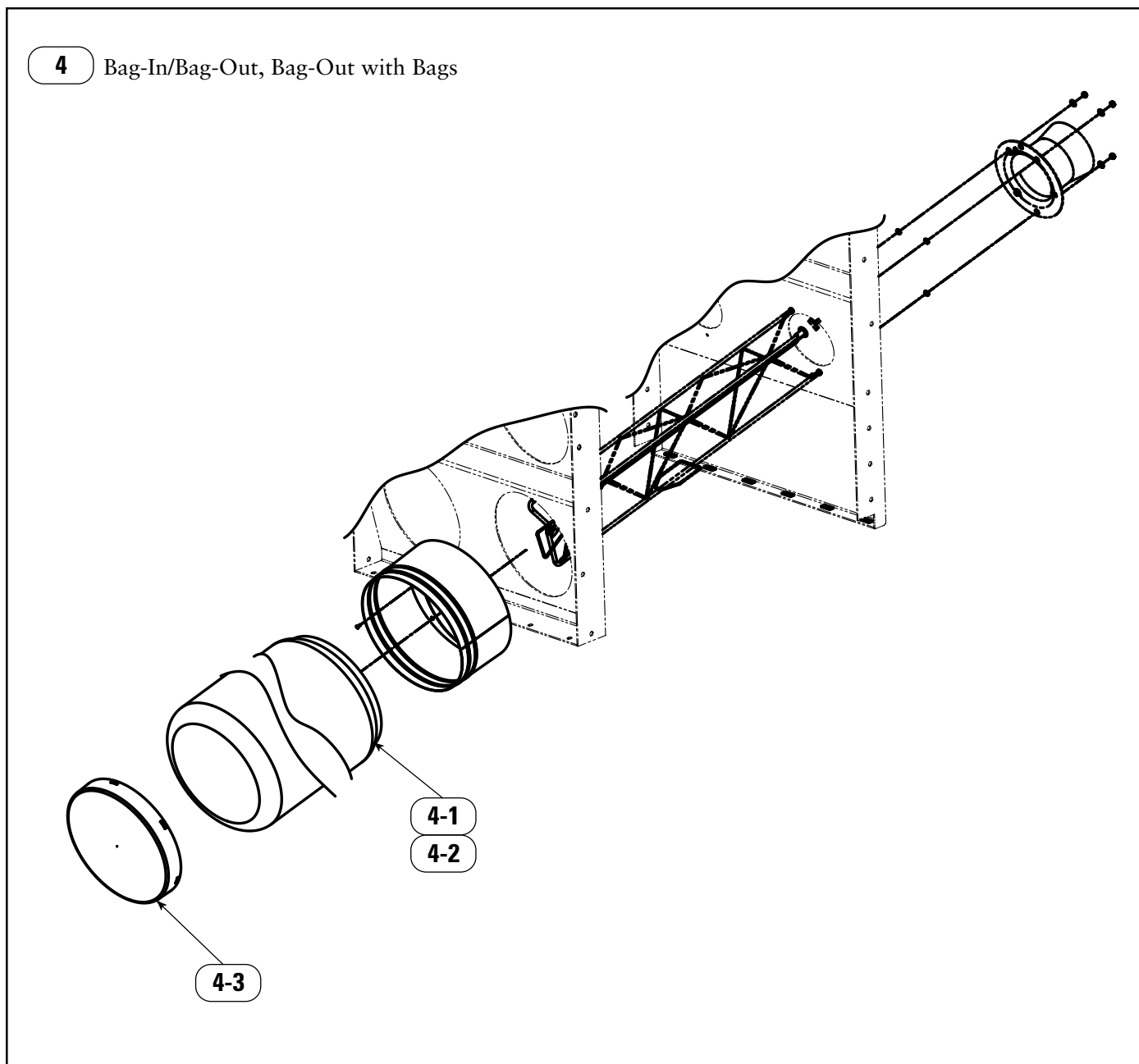
Bag-In/Bag-Out with Bag DFO 2-4/3-6

3-1	8PP-25372-00	Bag Polyethylene	All
3-2	8PP-25397-00	Webbing/Buckle Assembly 1-in	All
3-3	8PP-25373-00	Cap Polyethylene	All

Bag-Out with Bag DFO 2-4/3-6

3-1	8PP-25372-00	Bag Polyethylene	All
3-2	8PP-25397-00	Webbing/Buckle Assembly 1-in	All

Replacement Parts, continued

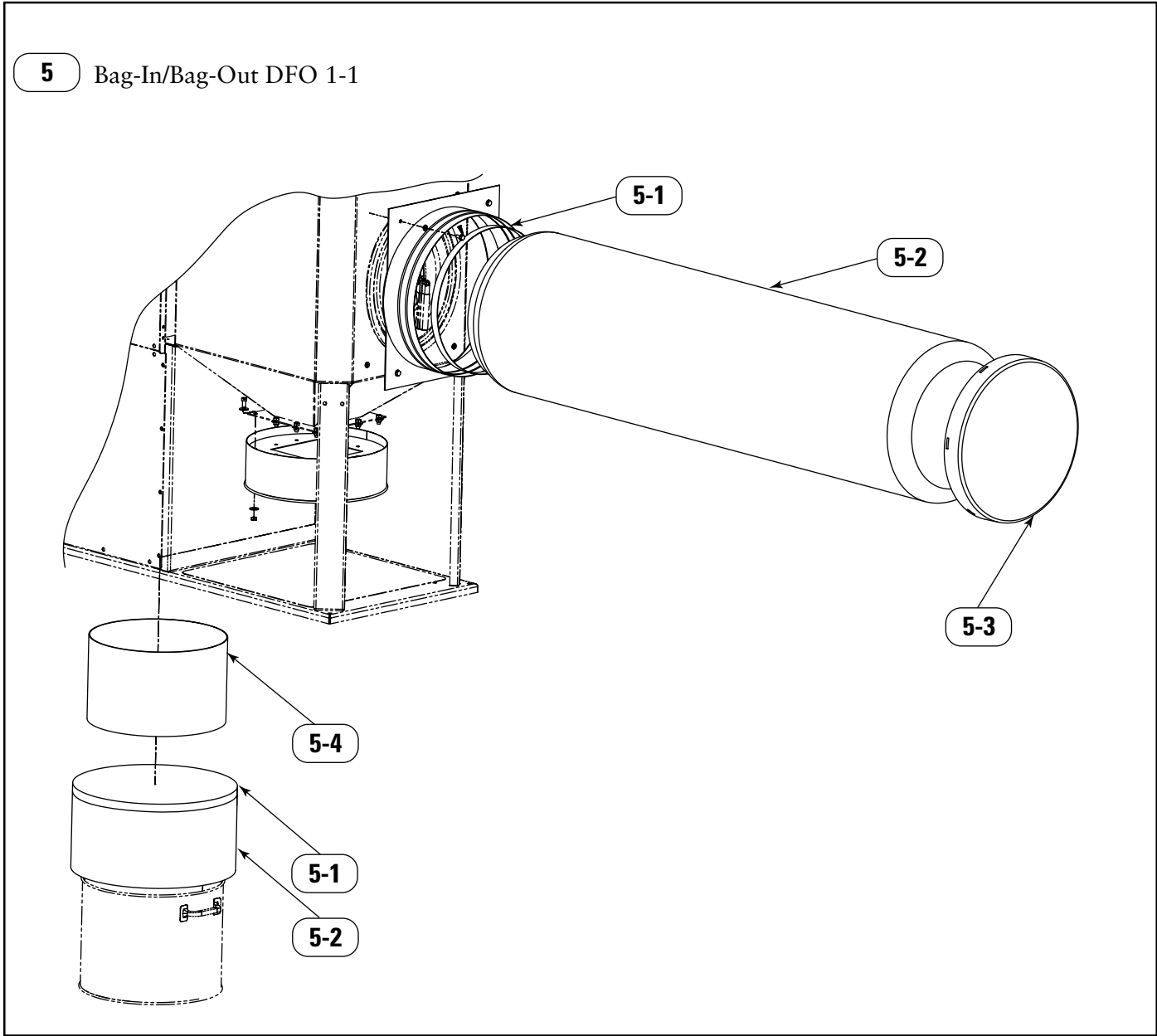


Parts Drawing 4, Bag-In/Bag-Out, Bag-Out with Bags

Item	Part Number	Description	Model
4	2SG-AD33498-01	Bag-In/Bag-Out with Bags DFO	DFO 2-8, 2-12, 2-16, 2-24, 2-36, 3-12, 3-24, 3-36, 3-48, 3-60, 3-72, 4-16, 4-32, 4-48, 4-64, 4-80, 4-96, 4-112, 4-128
4	2SG-AD33498-04	Bag-Out with Bags DFO	DFO 2-8, 2-12, 2-16, 2-24, 2-36, 3-12, 3-24, 3-36, 3-48, 3-60, 3-72, 4-16, 4-32, 4-48, 4-64, 4-80, 4-96, 4-112, 4-128
Bag-in/Bag-Out with Bag DFO			
4-1	8PP-25372-00	Bag Polyethylene	DFO 2-8, 2-12, 2-16, 2-24, 2-36, 3-12, 3-24, 3-36, 3-48, 3-60, 3-72, 4-16, 4-32, 4-48, 4-64, 4-80, 4-96, 4-112, 4-128
4-2	8PP-25397-00	Webbing/Buckle Assembly 1-in	DFO 2-8, 2-12, 2-16, 2-24, 2-36, 3-12, 3-24, 3-36, 3-48, 3-60, 3-72, 4-16, 4-32, 4-48, 4-64, 4-80, 4-96, 4-112, 4-128
4-3	8PP-25373-00	Cap Polyethylene	DFO 2-8, 2-12, 2-16, 2-24, 2-36, 3-12, 3-24, 3-36, 3-48, 3-60, 3-72, 4-16, 4-32, 4-48, 4-64, 4-80, 4-96, 4-112, 4-128
Bag-Out with Bag DFO			
4-1	8PP-25372-00	Bag Polyethylene	DFO 2-8, 2-12, 2-16, 2-24, 2-36, 3-12, 3-24, 3-36, 3-48, 3-60, 3-72, 4-16, 4-32, 4-48, 4-64, 4-80, 4-96, 4-112, 4-128
4-2	8PP-25397-00	Webbing/Buckle Assembly 1-in	DFO 2-8, 2-12, 2-16, 2-24, 2-36, 3-12, 3-24, 3-36, 3-48, 3-60, 3-72, 4-16, 4-32, 4-48, 4-64, 4-80, 4-96, 4-112, 4-128

Replacement Parts, continued

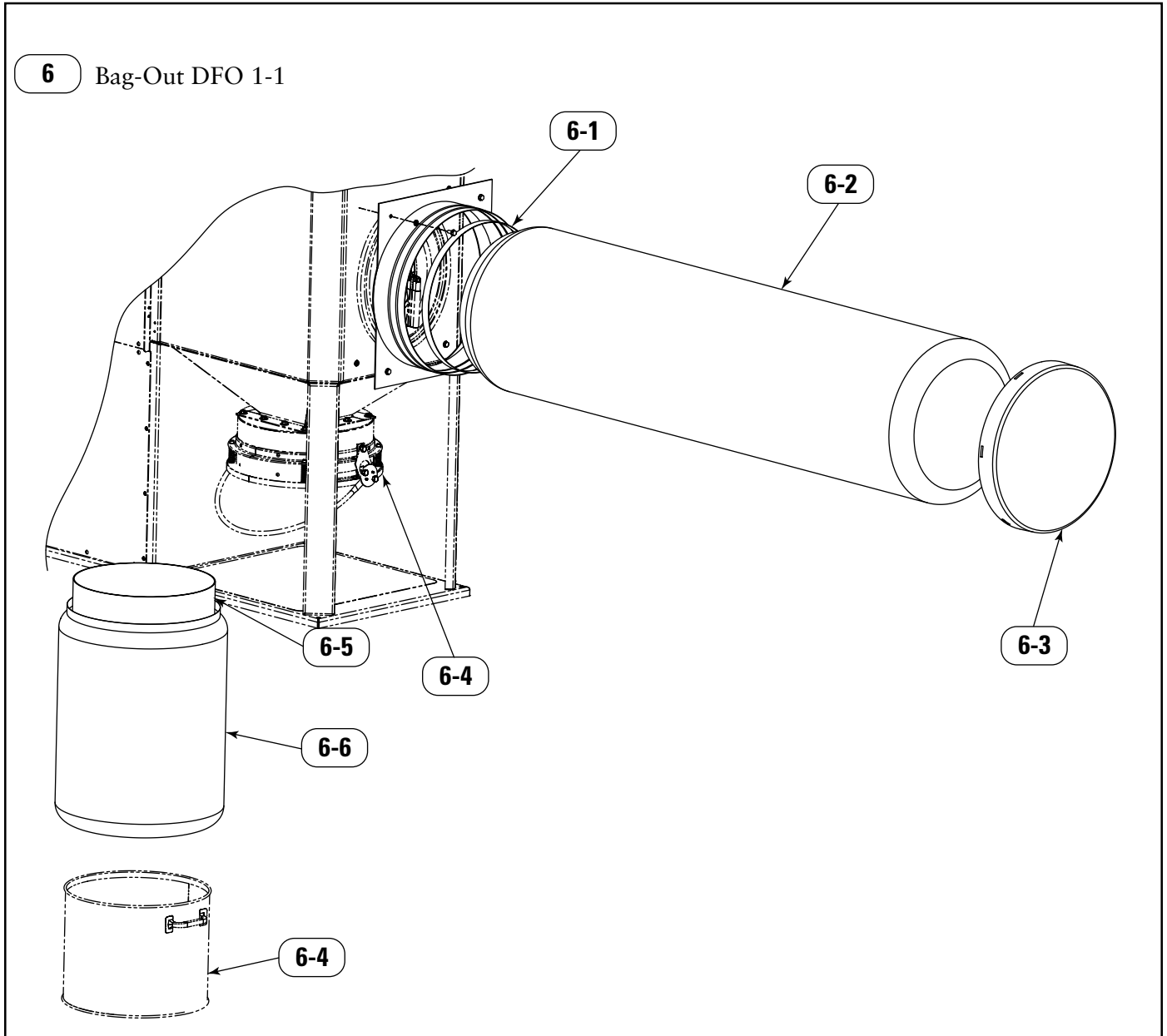
5 Bag-In/Bag-Out DFO 1-1



Parts Drawing 5, Bag-In/Bag-Out DFO 1-1

Item	Part Number	Description	Model
5	2SG-AD33576-01	Bag-In/Bag-Out DFO 1-1	DFO 1-1
5-1	8PP-25397-00	Webbing/Buckle Assembly 1-in	DFO 1-1
5-2	8PP-25372-00	Bag Polyethylene	DFO 1-1
5-3	8PP-AD31521-01	Cap Bag-in/Bag-Out	DFO 1-1
5-4	8PP-AD31616-01	Plastic Insert	DFO 1-1

Replacement Parts, continued

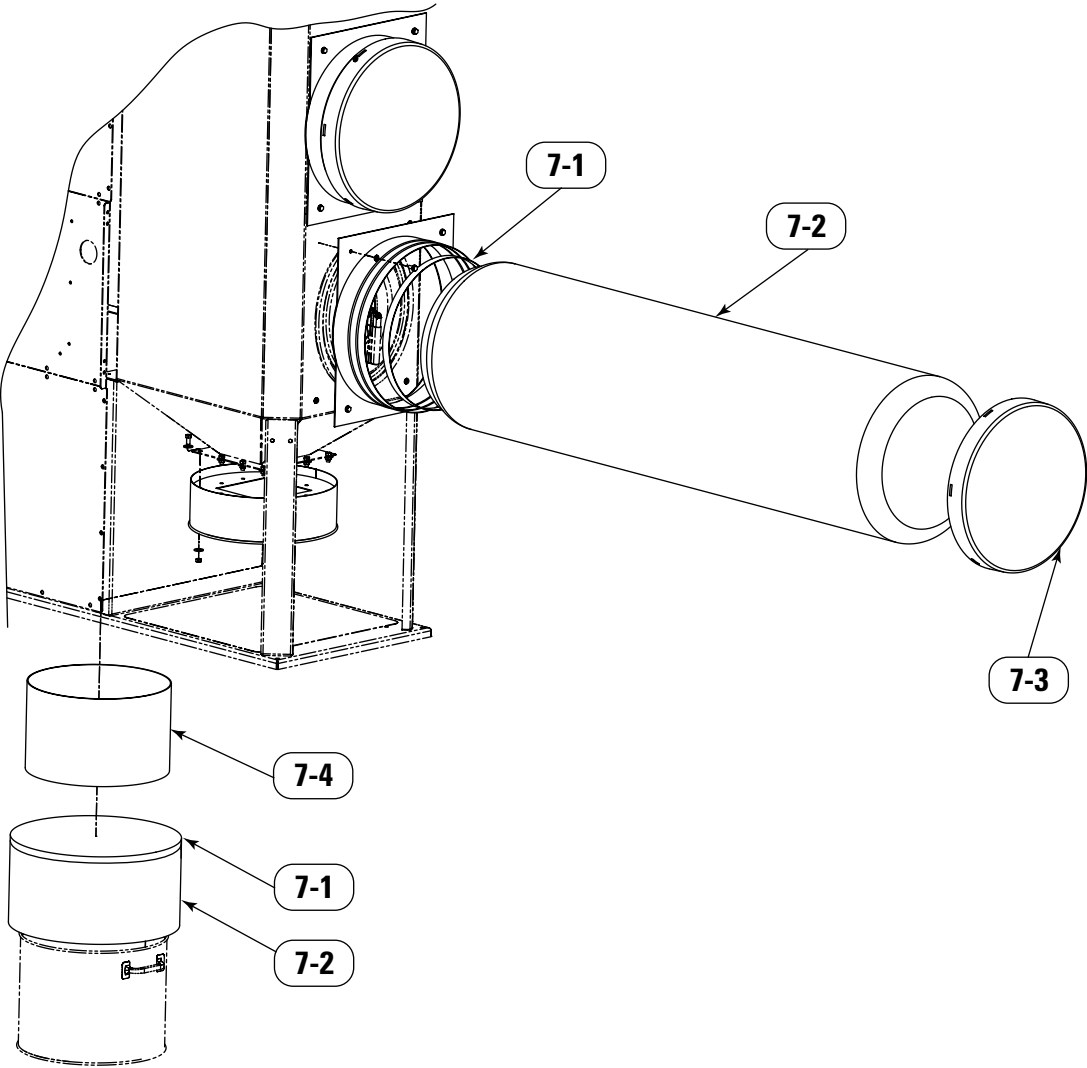


Parts Drawing 6, Bag-Out DFO 1-1

Item	Part Number	Description	Model
6	2SG-AD31260-01	Bag-Out DFO 1-1	DFO 1-1
6-1	8PP-25397-00	Webbing/Buckle Assembly 1-in	DFO 1-1
6-2	8PP-25372-00	Bag Polyethylene	DFO 1-1
6-3	8PP-AD31521-01	Cap Bag-in/Bag-Out	DFO 1-1
6-4	2SG-AD31231-01	Mounting Pack Adapter Sealer Gear	DFO 1-1
6-5	8PP-AD31616-01	Plastic Insert	DFO 1-1
6-6	8PP-AD31572-01	Bag Poly Dust Bin	DFO 1-1

Replacement Parts, continued

7 Bag-In/Bag-Out DFO 2-2

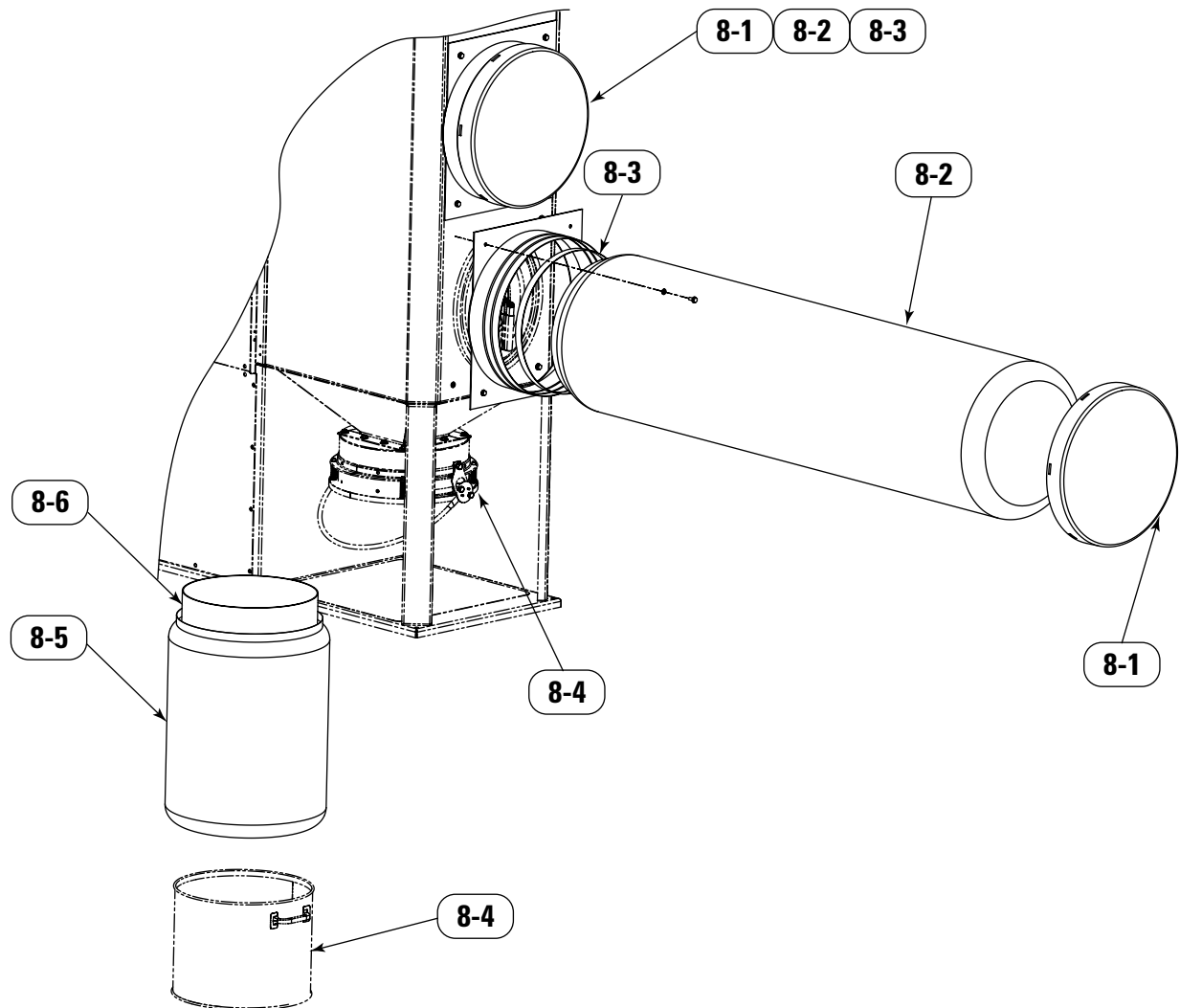


Parts Drawing 7, Bag-In/Bag-Out DFO 2-2

Item	Part Number	Description	Model
7	2SG-AD33576-02	Bag-In/Bag-Out DFO 2-2	DFO 2-2
7-1	8PP-25397-00	Webbing/Buckle Assembly 1-in	DFO 2-2
7-2	8PP-25372-00	Bag Polyethylene	DFO 2-2
7-3	8PP-AD31521-01	Cap Bag-in/Bag-Out	DFO 2-2
7-4	8PP-AD31616-01	Plastic Insert	DFO 2-2

Replacement Parts, continued

8 Bag-Out DFO 2-2

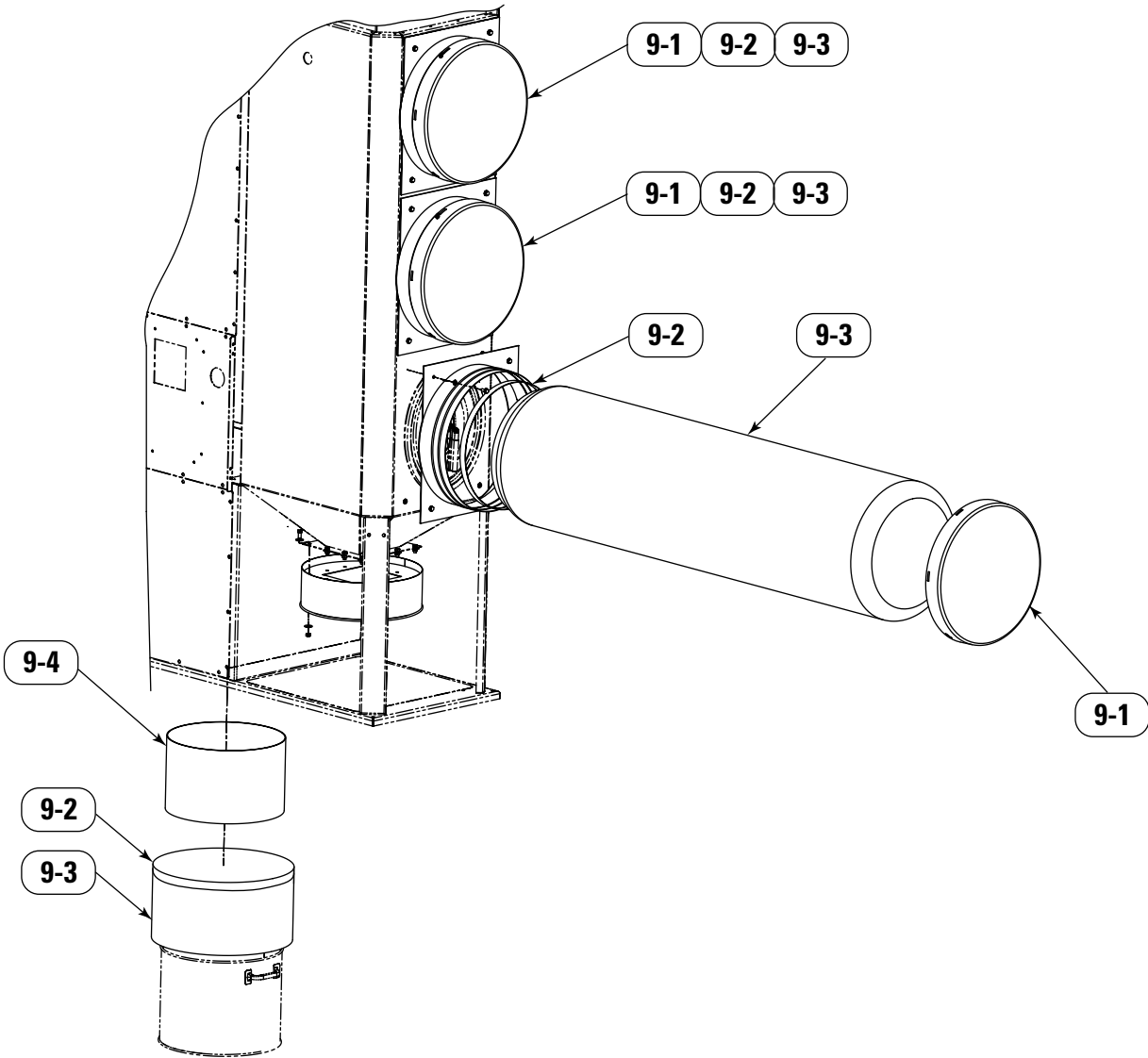


Parts Drawing 8, Bag-Out DFO 2-2

Item	Part Number	Description	Model
8	2SG-AD31260-02	Bag-Out DFO 2-2	DFO 2-2
8-1	8PP-AD31521-01	Cap Bag-in/Bag-Out	DFO 2-2
8-2	8PP-25372-00	Bag Polyethylene	DFO 2-2
8-3	8PP-25397-00	Webbing/Buckle Assembly 1-in	DFO 2-2
8-4	2SG-AD31231-01	Mounting Pack Adapter Sealer Gear	DFO 2-2
8-5	8PP-AD31572-01	Bag Poly Dust Bin	DFO 2-2
8-6	8PP-AD31616-01	Plastic Insert	DFO 2-2

Replacement Parts, continued

9 Bag-In/Bag-Out DFO 3-3

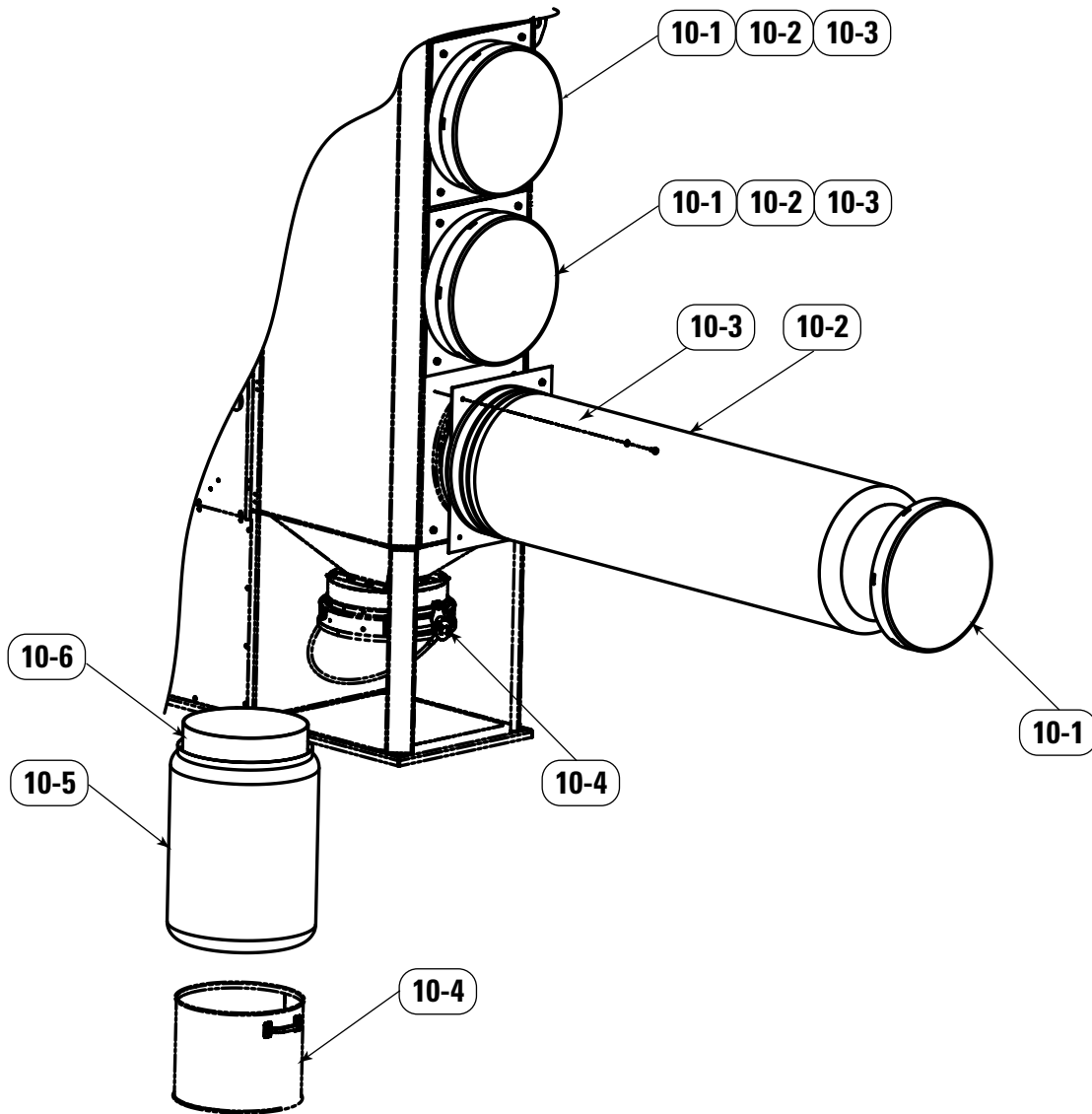


Parts Drawing 9, Bag-In/Bag-Out DFO 3-3

Item	Part Number	Description	Model
9	2SG-AD33576-03	Bag-In/Bag-Out DFO 3-3	DFO 3-3
9-1	8PP-AD31521-01	Cap Bag-in/Bag-Out	DFO 3-3
9-2	8PP-25397-00	Webbing/Buckle Assembly 1-in	DFO 3-3
9-3	8PP-25372-00	Bag Polyethylene	DFO 3-3
9-4	8PP-AD31616-01	Plastic Insert	DFO 3-3

Replacement Parts, continued

10 Bag-Out DFO 3-3

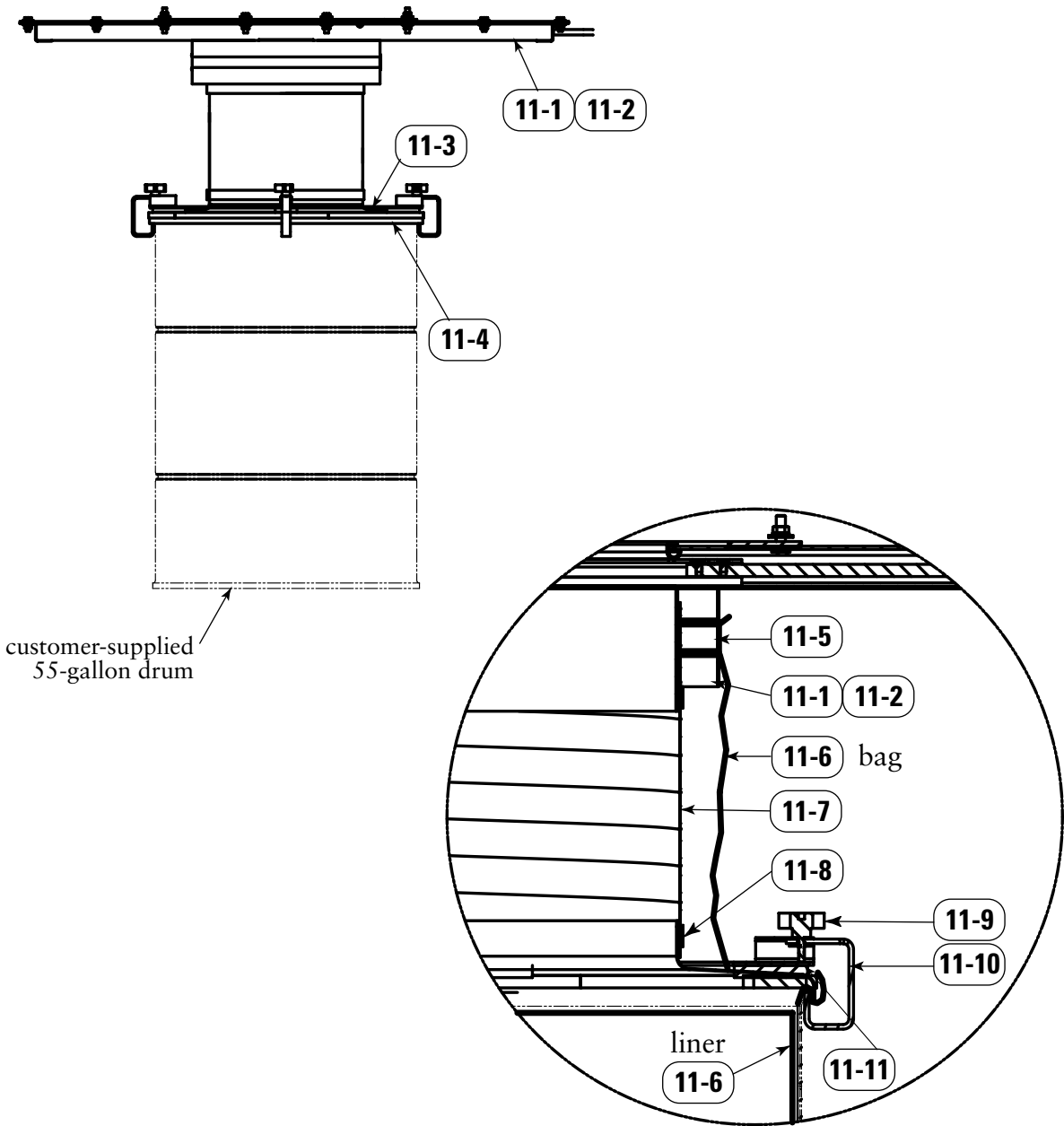


Parts Drawing 10, Bag-Out DFO 3-3

Item	Part Number	Description	Model
10	2SG-AD31260-03	Bag-Out DFO 3-3	DFO 3-3
10-1	8PP-AD31521-01	Cap Bag-in/Bag-Out	DFO 3-3
10-2	8PP-25372-00	Bag Polyethylene	DFO 3-3
10-3	8PP-25397-00	Webbing/Buckle Assembly 1-in	DFO 3-3
10-4	2SG-AD31231-01	Mounting Pack Adapter Sealer Gear	DFO 3-3
10-5	8PP-AD31572-01	Bag Poly Dust Bin	DFO 3-3
10-6	8PP-AD31616-01	Plastic Insert	DFO 3-3

Replacement Parts, continued

11 Bag-In/Bag-Out Pack DFT-DFO Hopper



Parts Drawing 11, Bag-In/Bag-Out Pack for DFT/DFO Hopper

Item	Part Number	Description	Model
11	2SG-AD33577-01	Bag-In/Bag-Out Bag-Out Pack 55 Gallon Drum 14-in Hose with Latches with Slidegate, DFT/DFO Hopper	DFT/DFO 2-8, 2-12, 2-16, 2-24, 2-36, 3-12, 3-24, 3-36, 3-48, 3-60, 3-72, 4-16, 4-32, 4-48, 4-64, 4-80, 4-96, 4-112, 4-128
11	2SG-AD33577-02	Bag-In/Bag-Out Bag-Out Pack 55 Gallon Drum 14-in Hose with Latches with Slidegate DFT/DFO Hopper	DFT/DFO 2-4/3-6
11-1	2SG-AD33578-01	Slide Gate Pack Bag-In/Bag-Out	DFT/DFO 2-8, 2-12, 2-16, 2-24, 2-36, 3-12, 3-24, 3-36, 3-48, 3-60, 3-72, 4-16, 4-32, 4-48, 4-64, 4-80, 4-96, 4-112, 4-128
11-2	2SG-AD33578-02	Slide Gate Pack Bag-In/Bag-Out	DFT/DFO 2-4/3-6
11-3	4MA-AD33585-01	Ring Weld Bag-In/Bag-Out 55 Gallon Drum	All DFT/DFO except DFO 1-1, 2-2, 3-3
11-4	3EA-20622-03	Cover Drum Assembly 14-in	All DFT/DFO except DFO 1-1, 2-2, 3-3
11-5	8PP-25397-00	Webbing/Buckle Assembly 1-in	All DFT/DFO except DFO 1-1, 2-2, 3-3
11-6	3EA-AD33580-01	Bag and Liner Kit, Bag-In/Bag-Out 55 Gallon Drum	All DFT/DFO except DFO 1-1, 2-2, 3-3
11-7	5PM-22557-03	Hose Duct Reinforced 14 ID x 14.5	All DFT/DFO except DFO 1-1, 2-2, 3-3
11-8	8PP-12772-00	Hose Clamp 14-in	All DFT/DFO except DFO 1-1, 2-2, 3-3
11-9	8PP-42473-02	Knob, 3 Lobe 1/4-20 x 1	All DFT/DFO except DFO 1-1, 2-2, 3-3
11-10	6MM-AD33584-01	Clamp with Weldment Bag-In/Bag-Out 55 Gallon Drum with Latch	All DFT/DFO except DFO 1-1, 2-2, 3-3
11-11	8PP-AD33583-01	Polyurethane Foam Pad Bag-In/Bag-Out 55 Gallon Drum Latch	All DFT/DFO except DFO 1-1, 2-2, 3-3

Service Notes

[illegible]

[illegible]

Limited Warranty

Donaldson® warrants to the original purchaser that the major structural components of the goods will be free from defects in materials and workmanship for ten (10) years from the date of shipment, if properly installed, maintained and operated under normal conditions. Donaldson warrants all other Donaldson built components and accessories including Donaldson Airlocks, TBI Fans, TRB Fans, Fume Collector products and Donaldson built Afterfilter housings for twelve (12) months from date of shipment. Donaldson warrants Donaldson built filter elements to be free from defects in materials and workmanship for eighteen (18) months from date of shipment. Donaldson does not warrant against damages due to corrosion, abrasion, normal wear and tear, product modification, or product misapplication. Donaldson also makes no warranty whatsoever as to any goods manufactured or supplied by others including electric motors, fans and control components. After Donaldson has been given adequate opportunity to remedy any defects in material or workmanship, Donaldson retains the sole option to accept return of the goods, with freight paid by the purchaser, and to refund the purchase price for the goods after confirming the goods are returned undamaged and in usable condition. Such a refund will be in the full extent of Donaldson's liability. Donaldson shall not be liable for any other costs, expenses or damages whether direct, indirect, special, incidental, consequential or otherwise. The terms of this warranty may be modified only by a special warranty document signed by a Director, General Manager or Vice President of Donaldson. Failure to use genuine Donaldson replacement parts may void this warranty. **THERE EXIST NO OTHER REPRESENTATIONS, WARRANTIES OR GUARANTEES EXCEPT AS STATED IN THIS PARAGRAPH AND ALL OTHER WARRANTIES INCLUDING MERCHANTABILITY AND FITNESS FOR A PARTICULAR PURPOSE, WHETHER EXPRESS OR IMPLIED ARE HEREBY EXPRESSLY EXCLUDED AND DISCLAIMED.**

Parts and Service

For genuine Donaldson Torit replacement filters
and parts, call the Parts Express Line

800-365-1331 USA

800-343-3639 within Mexico

www.donaldsontorit.com

For faster service, have unit's model and serial number,
part number, description, and quantity available.



Donaldson
Filtration Solutions

Donaldson Company, Inc.
Industrial Air Filtration
P.O. Box 1299
Minneapolis, MN 55440-1299
dustmktg@mail.donaldson.com

Donaldson Company, Inc. is the leading designer and manufacturer of dust, mist, and fume collection equipment used to control industrial-air pollutants. Our equipment is designed to help reduce occupational hazards, lengthen machine life, reduce in-plant maintenance requirements, and improve product quality.